

PARTNERING in Achievement

2025



INDEX

1 ABOUT US

2 COMPLIANCE

3 ERLF COMMITMENT TO LOCAL CONTENT

4 TERRALEX MEMBERSHIP

5 A GLIMPSE OF OUR CLIENTS

6 OUR PRACTICE, APPROACH, AND METHODOLOGY

7 SUSTAINABILITY CONSIDERATIONS

8 OUR SERVICES

9 YOUR CORE TEAM

Last update on March 2025



1

ABOUT US

We strive to be the leading law firm in Saudi Arabia by delivering dedication, quality and value added services to our clients



ABOUT US

Our established track record of more than (25) years practice in Saudi Arabia helping our clients to achieve their goals and providing them with our legal support across different practice areas; including corporate, commercial, regulatory, restructuring, and litigation. We are a well-distinguished and market leading law firm in the legal industry, we have successfully participated in major mandates for national and international clients.

“Our knowledge and understanding of the legal industry in Saudi Arabia, maintaining communication and trust with our clients and stakeholders”

Eyad Reda Law Firm LLP (“**ERLF**”) is full service legal practice in Saudi Arabia. With a well-diversified team, our expertise and track record are underpinned by an in-depth understanding of Saudi Arabia's regulatory environment, market drivers, legal framework, cultures and customs, direct and most relevant restructuring experience. Deeply entrenched in different legal practice areas, our lawyers maintain strong understanding and communication skills with our clients and stakeholders.

We are striving to remain the leading law firm in Saudi Arabia in terms of providing legal services. Our services are distinguished by knowledge, high quality, value added to the legal works. We always seek to expand our understanding and awareness of the full aspects of legal works of our clients and their sectors. Furthermore, we believe in the significant importance of establishing strong and cooperative relationships, as well as excellent communications to ensure high quality and provide the efficient and cost-effective services.

2

COMPLIANCE

Our team is fully committed and in compliance with the local laws and regulations



COMPLIANCE



ERLF, and its employees, confirm their full compliance with the effective laws in Saudi Arabia, which criminalize offering, giving, or promising to offer or give subsequent reward directly or indirectly, as well as laws that prohibit and criminalize subsequent reward in any form whatsoever; Le. cash, something with material or intangible value such as a present, gift, a training course, participation in a conference or event, etc, which have any material or intangible value for any of the persons associated with the Project.



ERLF ensures the correctness and integrity of all the data it provides regarding the disclosure of interests and their conflict. It also confirms and undertakes to disclose immediately the real or potential incidents, circumstances, or changes that have occurred or may occur in property, legal statuses, or kinship relations, which may have an impact on the disclosure provided, whether the effect is direct or indirect.



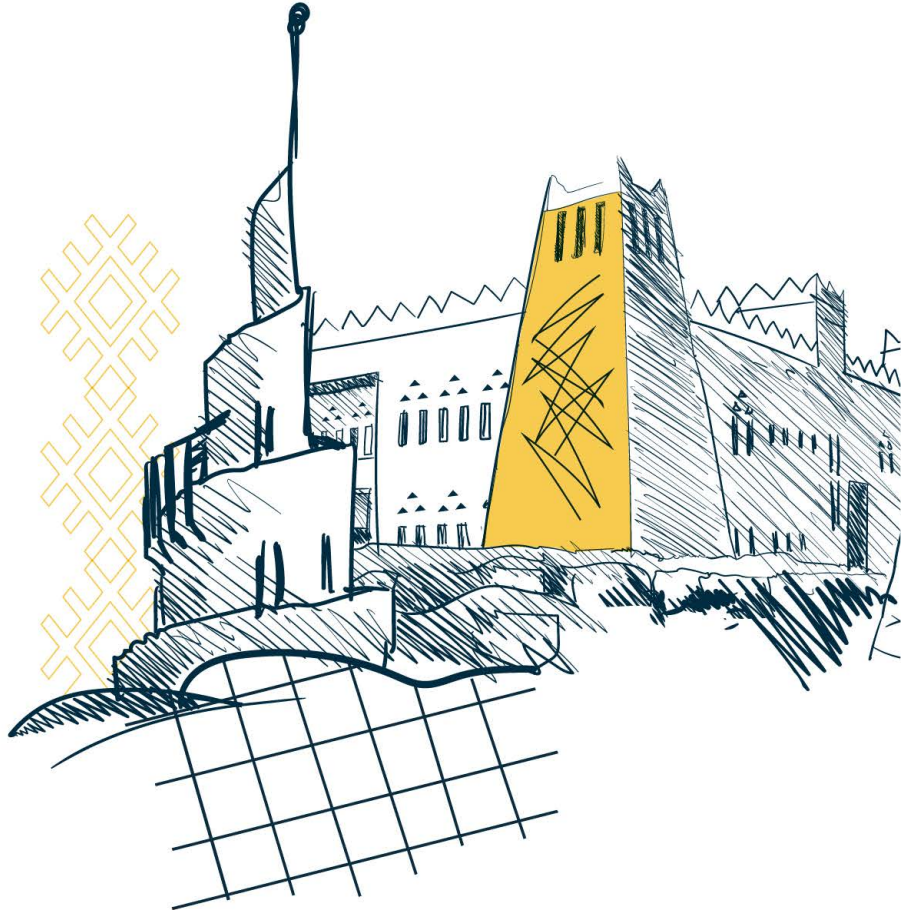
ERLF and its employees confirm their full commitment to fully comply with the regulations pertaining to combating corruption within Saudi Arabia, including, but not limited to, the Anti-Bribery Law issued by Royal Decree No. (M/36) of 29/12/1412 AH. The Office, and its employees, also confirms full commitment to the Anti-Money Laundering Law promulgated by Royal Decree No. (M/20) of 02/05/1439 AH.



ERLF, and all its employees, undertake to maintain the confidentiality of data and information of whatever nature or type that we obtain or may obtain through our contractual relationship, whether we obtain it directly or indirectly and in whatever form.

3

ERLF COMMITMENT TO LOCAL CONTENT



ERLF COMMITMENT TO LOCAL CONTENT

- ☒ Eyad Reda Law Firm has committed to applying the regulations mentioned in the local content preference list and to following indicators for measuring local content. This has made the firm one of the most important leading law firms in its field and able to provide exemplary legal services to government agencies in the Kingdom.
- ☒ The firm has also contributed to motivating the indicator of “local content in salaries” as it is a fully national Saudi law firm with a certificate in Saudization. The firm, with the hands of distinguished Saudi competencies, was able to provide legal services on a high level of mastery and professionalism.
- ☒ Then there is the indicator of “local content in capacity development”, which is an indicator that points to the firm’s belief in young Saudi capabilities and its investment in them. Eyad Reda Law firm ensures to train new graduates and to provide development and training courses for its employees.
- ☒ Eyad Reda Law Firm has also enriched the legal arena in the Kingdom, by posting legal content that speaks to the specialists and practitioners on many social media platforms. This was done through publishing valid and significant legal content in an innovative and contemporary way, making it easier to reach and be of benefit in both the Arabic and English languages. The firm has made sure to follow up on all the developments in the Kingdom and to deal with the most important legal matters and updates that affect public and private entities as well as individuals. These developments were introduced in a short and concise manner and were made easily accessible and verifiable to all parties. And thus, all of this has made the company a true example of elevating local content at all levels.
- ☒ By defining and promoting several values that are considered one of the most important pillars of work, the firm has promoted social integration between its employees and the community. Even with the multilingualism of its employees, the company has not ignored the importance of the local tongue, it being the main way to address the community. In fact, the firm has made sure to periodically publish research papers and articles in many languages and mainly Arabic, and that is to enhance public awareness and to transcend the legal sector. Eyad Reda Law Firm has also strived to enhance social relations between its employees and the community. It has proven its commitment to the local content by contributing to creating job opportunities and has received the Saudization certificate in its highest degree by providing cooperative training opportunities for law students, rather than adopting national competencies.
- ☒ Eyad Reda Law Firm stresses the importance of supporting legal content and urges companies to support it in various ways. That will enhance economic growth and creativity within the internal community as local content has a myriad of economic benefits that contribute to creating renewable job opportunities in the labor market.



EYAD REDA
إياد رضا
محامون ومستشارون قانونيون
Lawyers & Legal Consultants

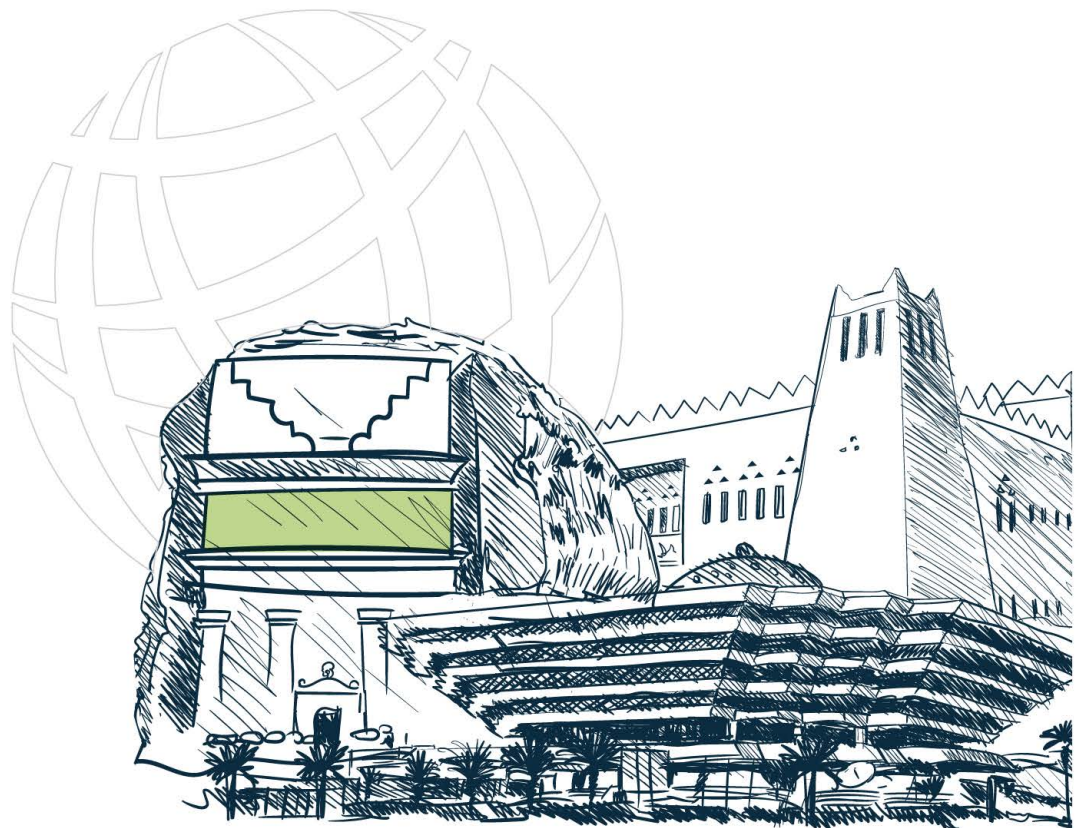


TERRALEX

4

TERRALEX MEMBERSHIP

Our exclusive membership with TerraLex in Saudi Arabia provides our clients with access to all legal specialties around the world



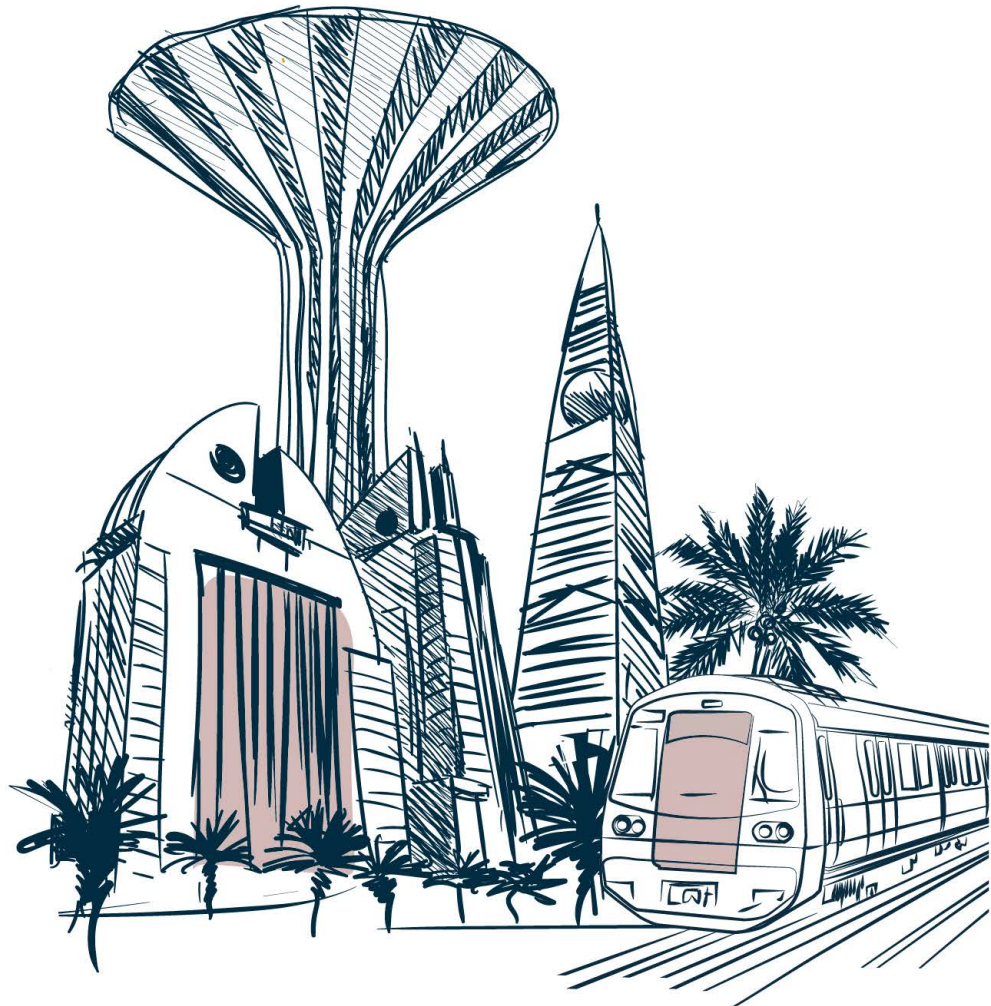
We have a prominent presence in many countries, and our clients can access all legal specialties around the world through our exclusive office membership with **TerraLex** in Saudi Arabia. **TerraLex** is a leading global network of independent law firms and offices. With more than (160) law firms and offices across more than (120) countries worldwide, **TerraLex** connects with the best law firms and law experts who are distinguished in various legal fields. For over 29 years, **TerraLex** members have provided quality legal services and advice to clients worldwide.

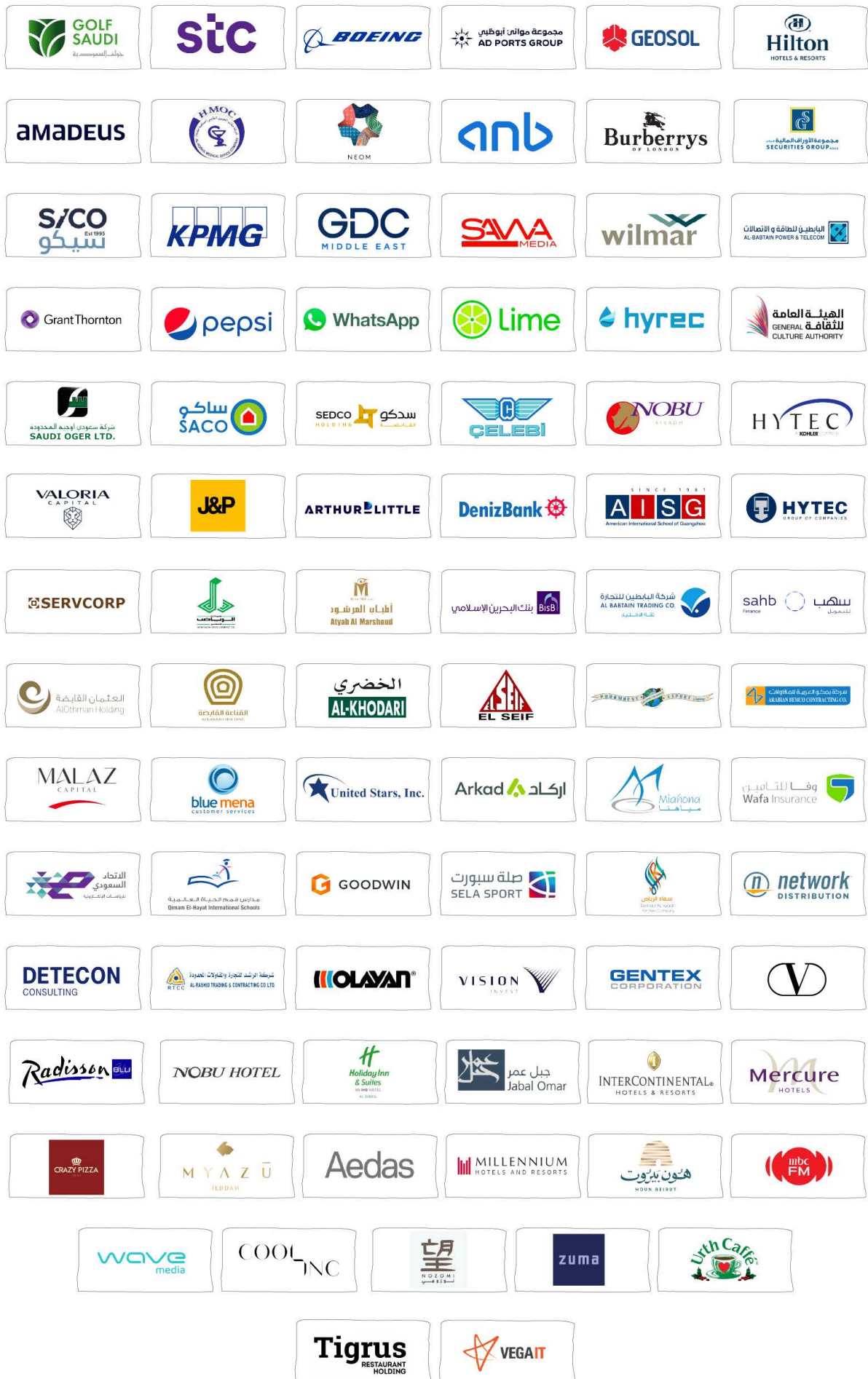


Our membership with **TerraLex** provides access to the global legal specialized expertise needed to provide our clients with the finest legal resources anywhere around the globe. alongside with ERLF on the ground team of lawyers and legal consultants. Most of them have obtained the necessary training and education in UK, USA, and others, besides their Shari'ah-based and legal qualification in Saudi Arabia.

5

A GLIMPSE OF OUR CLIENTS





6

OUR PRACTICE, APPROACH, AND METHODOLOGY

ERLF team has the expertise to deliver outstanding legal services to clients through the implementation of solutions that are tailored to their legal needs



OUR PRACTICE, APPROACH, AND METHODOLOGY

Experienced, well established talented team |

Our team has developed experiences on several areas, ranging from joint ventures, franchising, and distribution agreements to merger & acquisitions to restructuring projects involving multiple jurisdictions. Our lawyers have deep knowledge and understanding of the various regulatory legal aspects taking into considerations associated commercial and cultural surroundings. Our team has advised multiple of national and international clients in compliance aspects related to competition and antitrust, privacy and data protection, IP and E-commerce, healthcare and education, energy and industry.

A hands-on approach |

We dedicated to directly interact with many government entities to provide the best service to our clients, including the Ministry of Justice (MOJ), Board of Grievances (BOG), Saudi Arabian Central Bank (SAMA), the Capital Markets Authority (CMA), Ministry of Commerce (MOC), General Authority of Competition (GAC), Ministry of Investment (MISA), Public Investment Fund (PIF), Ministry of Human Recourses and Social Development (HRSD), Ministry of Finance (MOF), Zakat, Tax, and Customs Authority (ZATCA), Ministry of Communication and Technology (MCIT), Ministry of Foreign Affairs (MOFA) and other Judicial entities and committees including Bankruptcy, Dispute Banking Committee, Commercial Papers and Insurance. The firm has also played an essential role in advising and establishing governmental fully or semi owned funds as well as fully or partially owned companies.



OUR PRACTICE, APPROACH, AND METHODOLOGY

Advisory and Consultancy Approach |

A critical principle of our clients’ engagement is trust and reliability. Our team members’ knowledge and integrity are solid bases in maintaining a mutually beneficial relationship with our clients. We are positioned to be advisers to our clients, we handle conflicts, KYC and compliance seriously and apply zero tolerance toward it. We always aim to build a long-term relationship with our clients where we deeply understand their businesses and needs and accordingly design legal solutions around it.

“ERLF methodology is based on three components: Prior Preparation, Maximizing Use of Resource, Division and Diversity”



Prior Preparation: Our team believe in the importance of pre preparation, which is evident by holding internal workshops for preparing for the scope of the project and verifying that all team members understand its requirements and relevant tasks. These efforts represent, from the outset, a cornerstone in developing a clear framework for implementation of the scope of work through maximum utilization of human capital and other resources.

Maximizing Use of Resources |

Our team uses international expertise and its own previous experiences in the field of project work. In addition, ERLF leverages all knowledge resources, whether hard or soft, which is evident for the following:



Availability of models and a clear conceptualization based on previous experience of the project implementation mechanism and the form of its deliverables.



Existence of members with international experience to the work team.



Familiarity with the necessary hard and soft knowledge sources for providing the necessary information to ensure maximum benefit in the project work and achievement of its objectives.

OUR PRACTICE, APPROACH, AND METHODOLOGY

Division and Diversity I

We believe that diversity in our experience is a strength for us and an important instrument for implementing the scope of work. Diversity in the work environment means new visions and creative ideas, which is evident when dividing works that require intellectual efforts in terms of research and analysis, which further result in multiple documents necessary for review and audit by the work team assigned to the project, which makes the deliverable of the highest possible quality based on broader insights to cover all possible aspects. This is evidenced by the following:

Division of work paths between the project team members to achieve the broadest vision and the highest degree of comprehensiveness.



Identifying points of contact ready and responsive in an appropriate time to ensure flawless progress of the engagement.

Conducting thorough reviews on the single deliverable in a manner that achieves the highest degree of clarity and quality.

7

SUSTAINABILITY CONSIDERATIONS

We strive in achieving the highest levels of sustainable environmental operation and making a positive impact in the community



SUSTAINABILITY CONSIDERATIONS

ERLF Environment Sustainability Policy |

Introduction

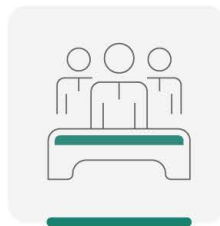
Clean or environmental operation of businesses or professional activities, which aims at reducing the negative impact of such activities and works on society and the environment, has become a cornerstone of professionalism in carrying out businesses and practicing activities, as well as a moral, religious, legal, and national commitment towards society and the environment. All the foregoing aims at the achievement of a key and highly impactful result, which is sustainability, so that no activity, work, generation, or period solely benefits from the resources Allah has given us, causing damages to those coming after it on several levels, namely:



ENVIRONMENTAL



ECONOMIC



SOCIAL



PSYCHOLOGICAL



HEALTH

Given the foregoing context, we -in ERLF- believe in the importance of environmental operation, and we seek to observe, measure, and follow up development, preparation, and implementation of a methodology for the same that would contribute to achieving the highest levels of environmental operation, and goes beyond to making a positive impact.

ERLF team works according to the environmental practices to activate the importance of environmental operation on a practical level by trying to balance what ERLF consumes and what it produces Accordingly, this policy confirms ERLF's commitment to environmental operation and lists key practices that it adopts and obligates each new member who join the team. This policy also sets out key future goals of ERLF for a sustainable environmental operation methodology.

SUSTAINABILITY CONSIDERATIONS

Consumption |

Resources



Paper is the most prominent resource that is continuously and widely consumed in law firms and legal consultancies. Since 2018, ERLF has pursued a policy based on reducing the use of paper and replacing it with soft copies even in its transactions with its clients, and significantly reducing printing. One of the results of this practice was that the volume of printing and paper usage decreased by more than (30%) than before.



ERLF is seeking to develop an accurate measurement mechanism for the volume of paper consumption to reduce it in a systematic way. ERLF provides its employees with all supplies of utensils for use when eating and drinking, instead of plastic containers that result in large and daily consumption, and thus has reduced its use of plastic containers to no more than (20%) of days in one year.

Power



ERLF is determined to conserve power and reduce consumption by following up on its employee's commitment to shutting down all electrical appliances when not in use, and outside official working hours. ERLF allocates one multi-use printer for all its employees, which contributes to reducing power used for these devices, and reducing their consumption.

The company approaches telecommuting policy as an influential option in productivity as well as an environmental option, since, given that most of the company's team members use their own transportation, the resulting fuel consumption is multiplied in the event of attendance at duty stations, while the telecommuting approach at intermittent intervals - depending on the need - has become. It affects the reduction of fuel use and consumption, which has proven effective, especially after the coronavirus pandemic.

SUSTAINABILITY CONSIDERATIONS

Results |

Waste



The practices in place for the consumption phase have reduced ERLF's operation waste to a reasonable extent. The process of removing waste from ERLF does not accordingly take place daily, which indicates a decrease in its quantity due to such practices.

Positive Impact

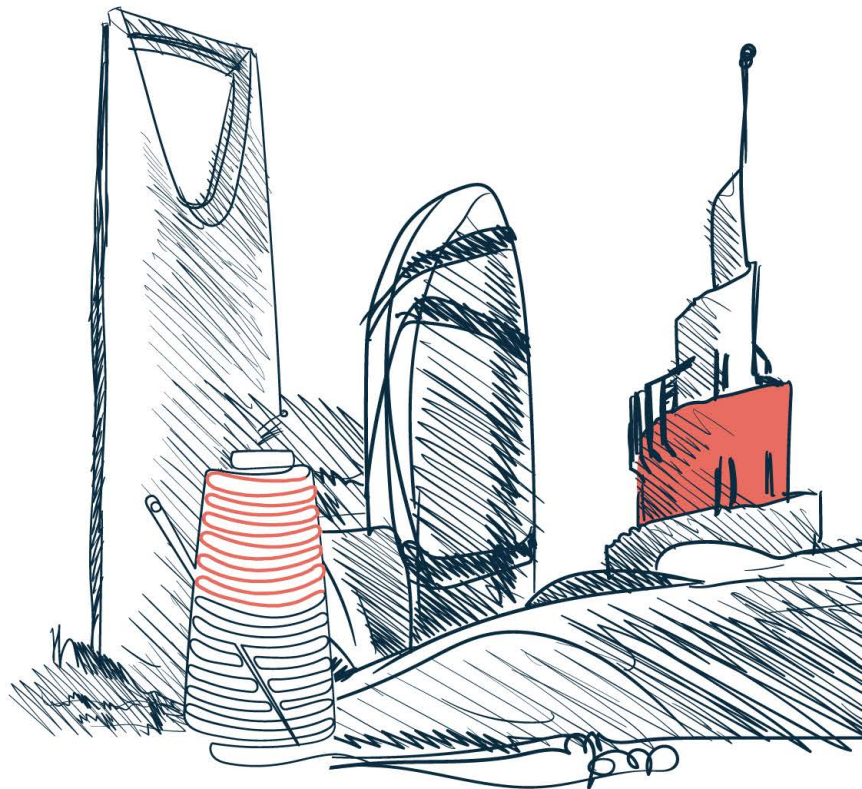
ERLF has an initiative in place, which is (providing free legal services to serve non-profit businesses, individuals, and initiatives), and thus ERLF seeks to provide its services, in this regard, to environmental associations and organizations, to obtain legal services that contribute to their continuity and the preservation of their rights.

ERLF fundamentally concerned with providing indoor plants to all its employees and in its halls as several studies revealed the positive impact of this practice in the air and health in general, as well as the fact that it strengthens the bonds with nature. Building such a relationship is an essential matter in changing/behavior to preserving and caring for the environment.

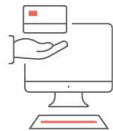


OUR SERVICES

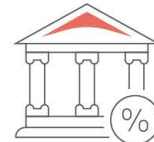
We provide a wide range of legal services tailored to our clients' needs



OUR SERVICES



CORPORATE, COMMERCIAL,
CAPITAL MARKETS AND PPPs



RESTRUCTURING AND
BANKRUPTCY



REGULATORY AND
COMPLIANCE



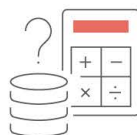
FAMILY BUSINESSES,
GOVERNANCE AND
SUCCESSION



DRAFTING REGULATIONS AND
LEGISLATION



DISPUTE SETTLEMENT AND
LITIGATION



FINANCE AND BANKING
PRACTICE



E-COMMERCE, IP, PRIVACY
AND DATA PROTECTION

OUR SERVICES

1- CORPORATE, COMMERCIAL, CAPITAL MARKETS AND PPPs |

Overview

Our team has worked on deals ranging from local joint ventures, franchising, and distribution agreements to complex restructuring projects involving multiple jurisdictions. Our lawyers have deep knowledge and understanding of the various regulatory authorities and are culturally attuned to. Our lawyers also have built comprehensive and detailed understanding of the requirements which can impact corporate operations and business demands.

Relevant Experience

- ☒ Advising a leading European bank on the establishment of a compound fund for a new private placement with the CMA, a SAR 450 million.
- ☒ Advising a number of global brands in retail, healthcare, and technology in regard to agency and distribution law, providing them with continuous legal advice relating to business activities and market access. Our team has managed to provide legal advice and support in relation to day-to-day corporate / commercial inquiries including matters associated to JVs, shareholding, management, competition and compliance.
- ☒ Advising a Spanish company in relation to the Saudi law aspects of a potential business divestment and the associated corporate restructuring.
- ☒ Advising a large Saudi contracting and trading company on the sale of a majority stake in a testing services company, SAR 300 million.
- ☒ Representing a GCC-based entity in SAR 1.5 billion private offering. This involved working closely with the client to draft the offering memorandum and ancillary documentation and counseling the client on compliance with regulations applicable to private offerings and financial intermediaries in Saudi Arabia.
- ☒ Advising on PPP projects between Saudi fund investors and Saudi universities to create the infrastructure of educational, residential, and commercial projects with few different creative financial and structural solution, a SAR 600 million project.
- ☒ Advising a Saudi leading electromechanical company on a SAR 750 million MEP contract for a multiuse complex hotel in the western province.
- ☒ Advising two multinational developers on their IPO in the Saudi market, advising on all legal associated matters with a listing process including working with all stakeholders and advisers, capitalized at SAR 4.8 and 15 billion.

OUR SERVICES

2 – FINANCE AND BANKING PRACTICE |

Overview

We advise on the full spectrum of banking and financial matters to national and international financial institutions ranging from financial regulations advice, product development and submissions, cross-border financing transactions, structuring and incorporation of financial funds and financial institutions. Our team members are experienced in providing the necessary legal support to obtain licenses associated with funds and/or banks activities.

Our in-depth knowledge of the regulatory environment, our understanding of our client's needs, our strong communication with relevant regulatory bodies, give us a strong basis to provide practical and sound advice.

Our team has also lead and participated in negotiations of lending and financings, both nationally and internationally, as well as representing both financial institutions and borrower.

Our team has significant experience including but not limited to advising on complex disputes relating to financial instruments and banking litigation. We seek to create strategies to safeguard clients' assets and reputations and enable them to concentrate on pursuing their business objectives with confidence.

Relevant Experience

- ☒ Licensing insurance, reinsurance, and brokerage insurance companies by leading the legal efforts to obtain required licenses from SAMA and other relevant governmental entities.
- ☒ Advising a number of authorized persons licensed by CMA/SAMA in different regulatory aspects including obtaining approvals, drafting funds' documents, dealing with investigations and compliance, other legal inquiries related to their operations and/or clients.
- ☒ Assisting the client on the renewal of finance lease license, provide legal and financial advice in relation to the governance and their transactions and day-to-day operations.

OUR SERVICES

3 – RESTRUCTURING AND BANKRUPTCY |

Overview

We provide our solutions to national and international clients at different stages and levels of restructuring and/or bankruptcies. Our team members has been involved in advising clients during financial difficulties, market crises, and pandemics where they had the opportunity to lead the first submissions before the commercial court of the restructuring options that are regulated by the provisions of the Bankruptcy Law including, protective settlement, and financial restructuring and bankruptcy.

Our team are experienced to deal with all aspects of restructuring including operational restructuring, distressed debt, merger & acquisitions, and asset in financial recovery as well as our services in due diligence reports and formal representation in bankruptcy procedures and liquidations.

Our experienced team specialized in restructuring and resolving organizational crises is dedicated to take care of our clients' interests wherever they are at any stage of their business, by providing possible solutions to legally solve financial distress situations in accordance with the Saudi bankruptcy law and its implementing regulations. It is a crucial point when advising our clients to always evaluate different elements of risks, particularly those related to shareholders, board, executive management.

Relevant Experience

- ☒ Drafting regulatory framework for constructions, industrial infrastructure, utilities, and logistics sector in the Eco-nomic Cities in Saudi Arabia.
- ☒ Participating and leading work force to review public transportation and health care system in Saudi Arabia and request regulatory changes.
- ☒ Conducting a national compliance due diligence in telecommunication and technology in Saudi Arabia and propose legal and regulatory changes based on international best practice.

OUR SERVICES

4- REGULATORY AND COMPLIANCE |

Overview

During the last 20 years ERLF practice team members has participated and lead key regulatory reforms, varying from financial regulations to different sectors and areas including healthcare, transportation logistics, industrial, telecommunications and privacy, media, defense, culture, hospitality, entertainment, municipalities, banking and corporate. The firm has also participated effectively in international regulatory aspects including adherence to international agreements and treaties, bilateral and multilateral.

In the other hand, complying with numerous regulations and all new legal reforms affecting businesses will certainly be challenging. ERLF will help to ensure that your business understands its regulatory obligations and always remains compliant. The firm helps its clients to invest in compliance and avoid the high cost of violations.

Our team is dedicated providing quality, practical advice to assist our clients to protect their businesses from the consequences of regulatory non-compliance. We can help our clients to design and implement compliance systems. We offer expertise and fresh thinking in areas such as competition, financial services, data protection, health & safety, and licensing.

We focus on regulatory compliance and designing and implementing policies, procedures, and practices to achieve this. We can also help achieve swift resolution of compliance issues and assist in deals with law enforcement and other regulatory bodies when this is necessary.

Relevant Experience

- ☒ Drafting regulatory framework for constructions, industrial infrastructure, utilities, and logistics sector in the Eco-nomic Cities in Saudi Arabia.
- ☒ Participating and leading work force to review public transportation and health care system in Saudi Arabia and request regulatory changes.
- ☒ Conducting a national compliance due diligence in telecommunication and technology in Saudi Arabia and propose legal and regulatory changes based on international best practice.
- ☒ Acting as a lead adviser in the workforce conducting comprehensive due diligence in regulatory aspects related to corporate and commercial reforms in Saudi Arabia.

OUR SERVICES

5 – E-COMMERCE, IP, PRIVACY AND DATA PROTECTION |

Overview

We are well placed to assist our clients as we offer solid local knowledge and understanding of Saudi laws. Our expertise and track record is supported by an in-depth understanding of Saudi regulatory environment, market drivers, legal framework, commercial and corporate general/transactional know how, cultures and customs. Deeply entrenched in the local market, our lawyers maintain understanding and communications with relevant regulatory bodies.

Our relevant experience enables us to provide a full range of corporate and commercial across sector e-commerce, IP, privacy and data protection legal services across multiple practices.

Relevant Experience

- ☒ Advising two major Asian international gaming companies regarding advertisement of online membership, gaming, tournament and online pools.
- ☒ Drafting contracts and T&C to regulate the relationship between a client and its application users, including providing an advice in relation to online hospitality activities.
- ☒ Providing legal support and drafting compliance handbook regarding online operations, e-commerce, competition, consumer protection, employment, warranties, and other legal aspects to one of the world largest online retail companies who recently started their operations in the Saudi market.
- ☒ Providing comprehensive ongoing legal advice to regional food retail company and global soft drinks company and national paper and stationery company, including providing legal advice related to contracts, vendors, leases, employment, end users, financing, and compliance.
- ☒ Drafting service level agreements between three e-wallets and fintech with seven Saudi banks to provide e-payment solutions.
- ☒ Providing a legal advice and regulatory compliance report for an EU car manufacturing company regarding IP and privacy laws associated with their operating system solutions with their cars.

OUR SERVICES

6 – FAMILY BUSINESSES, GOVERNANCE AND SUCCESSION |

Overview

We help family businesses to be institutional so they can survive, we help them to tap into greater potential. ERLF team provide various legal services for family-owned business that ranges from establishing the family business, handling corporate and commercial contracts and agreements, as well as designing business' governance structures and risk control standards, planning and designing succession. We assist our clients to legally handle business transformation in a tailor-made approach to assure governance and sustainability.

Relevant Experience

- ▣ Advising and judicially representing family business group in dealing with restructuring, debts, and managing settlement process with more than 130 creditors of a SAR 22 billion.
- ▣ Advising three key family businesses with a total share's capital value of SAR 1.5 billion in matters related to restructuring of establishing JV's, contracts, and M&A.
- ▣ Advising five Saudi family-owned joint hyper stock companies in healthcare, construction, insurance; and tourism and hospitality industry in connection with SAGIA, MOCI, and CMA on contracting, regulatory and compliance matter.
- ▣ Advising a family-owned conglomerate on its potential multi-million acquisition in the automotive industry, in establishing group projects with total capital value of SAR 400 million to become one of the leading companies in providing.
- ▣ Advising a family-owned business on drafting and executing full legal documentations of family business constitutions regulating a full spectrum of topics including governance, succession, expansion, competition, exit and spin off, dispute settlements.
- ▣ Advising a Saudi family group regarding its dual listing in an investment fund in Dubai, which invests in two Saudi leasing companies in Saudi Arabia, with the aim of complying with Saudi securities regulations, companies' law, and combating cover-ups.

OUR SERVICES

7 – ADR, DISPUTE SETTLEMENT AND LITIGATION |

Overview

ERLF is distinguished from many other law firms in providing highly specialized dispute settlements and litigation legal support. What position ERLF apart is a reliable, local and on the-ground knowledge and experience which is provided according to best international standards. ERLF always meets client's needs in various fields and assure exceeding clients' expectations.

Our team are skilled in litigation and arbitration as well as alternative dispute resolution and they use this expertise with the clients devise the best strategies. In this field, we work to manage potential risks and implement effective solutions to reduce costly legal escalation.

Accordingly, we recognize the importance of working to resolve complex business disputes quickly and as effectively as possible while providing solutions that are compatible with business objectives.

At ERLF we believe in the paramount importance of establishing strong and cooperative relationships as well as excellent communication in order to ensure a high quality with effective services, accurate, and cost-effective, while recognizing the sensitivity of the time factor, we neutrally advise our clients and evaluate all risks associated with litigation. We understand how expensive and time/efforts consuming it can be, but sometimes it is the only solutions.

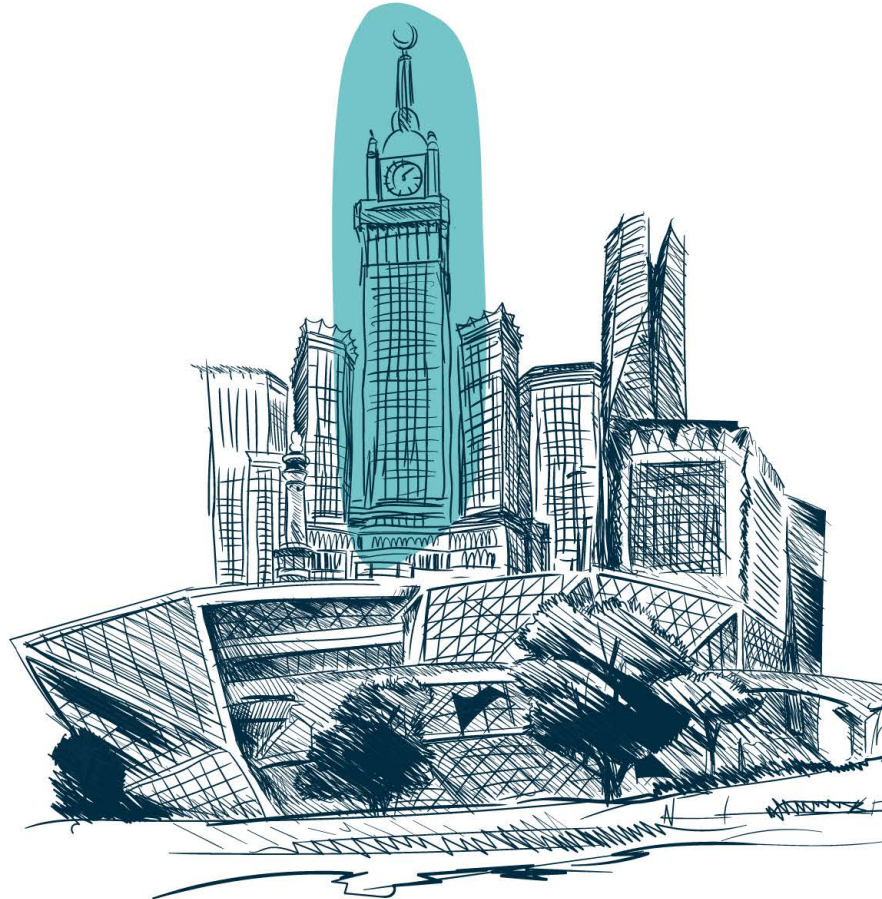
Relevant Experience

- ☒ Acting as a mediator in several representations of clients where time and cost was critical to mediate and to avoid formal process, disputed amounts vary from SAR 16 million to SAR 780 million.
- ☒ Representing a family company in debt restructuring and completing court settlement procedures with more than 130 creditors representing a debt of SAR 22 billion.
- ☒ Representing an international services provider in a DIFC arbitration case applying Saudi laws.
- ☒ Representing several Saudi and non-Saudi businesses in relation to enforcement of foreign judgments and international arbitration awards.



OUR TEAM

We provide a dedicated team to help our clients with their legal needs



OUR TEAM

Our Inspiring and Innovative Leader |



Eyad Reda

Founding Managing Partner

Eyad, is the Founding Managing Partner of Eyad Reda Law Firm LLP. For more than (25) years, he is specialized in commercial, investment and financial laws and the associated legal matters. Also, he is specialized in matters related to the preparation of laws and drafting of regulations, providing advice to the clients about restructuring the legal businesses where the government is a stakeholder, litigation issues, legislation, settlement and resolution of legal and financial disputes, international and regional agreements, with special concentration on specialized investment and financial legislation and national and regional commercial legislation.



OUR TEAM

Our Intellectually-driven Partner |



Abdulrahman Aldaej

Partner

Abdulrahman brings more than (17) years' experience to the firm, with an impressive track record in Corporate, Banking, and Transactional Mandates. Abdulrahman joined the firm in 2017 coming from the banking sector. He successfully established and led the international litigation practice in the firm as well as participating in major Corporate and Regulatory transactions.



OUR TEAM

Our Leaders and Decision-Makers |



Abdulrahman Bawarith
Legal Director



Ziyad Bin Shamran
Senior Legal Consultant



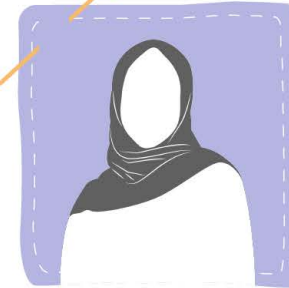
Musab Alosaimi
Senior Legal Consultant



Turki Albaijan
Senior Legal Consultant



Omar Alhusayni
Senior Legal Consultant



Marwah Alharbi
Senior Legal Consultant

OUR TEAM

Our Legal Luminary |



Abdullah Binladen
Legal Consultant



Abdulaziz Alohali
Legal Consultant



Baker Fallata
Legal Consultant



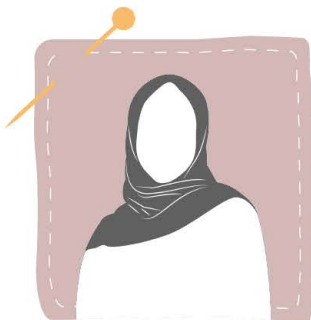
Othman Alhadlaq
Legal Consultant



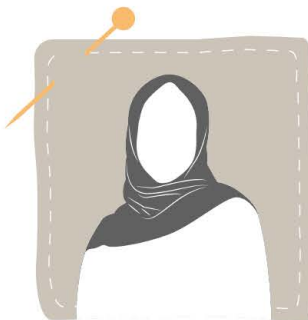
Meshari Almufarriji
Legal Consultant



Nasser Aljarba
Legal Consultant



Huwayda Abuthiyab
Legal Consultant



Haifa Alsulami
Legal Consultant



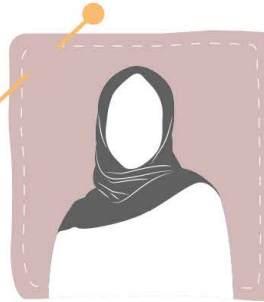
Nadia Alshaikhmubarak
Legal Consultant

OUR TEAM

Our Bright Minds and Future Leaders |



Reema Abanumay
Legal Specialist



Sarah Almahfoz
Legal Specialist



Khalid Alghamdi
Legal Specialist



Abdulaziz Althobaiti
Legal Specialist



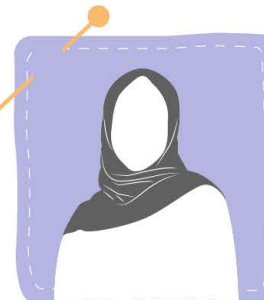
Aiman Aldaghar
Legal Specialist



Abdulmajeed Matbouli
Legal Specialist



Haifa Alsubaie
Legal Specialist



Nourah Alsubaei
Legal Specialist



Abdulaziz Alfuntukh
Legal Specialist

OUR TEAM

Our Responsibility and Sustainability Partner |



Zainab Al Talib

Partner

Zainab is focusing on the vision and strategy aspects of the business through teaming up with professionals to manage the operational side of the firm including safeguarding the ethical and legal integrity of the firm, her role further focuses on bringing highly valued business support services, driving efficiency gains, increase productivity, improve employee wellbeing, as well as enhance the overall client experience.



OUR TEAM

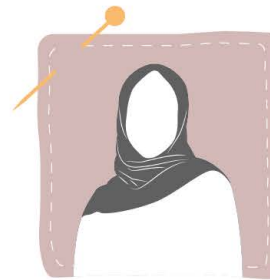
Organizational Thinking and Creativity |



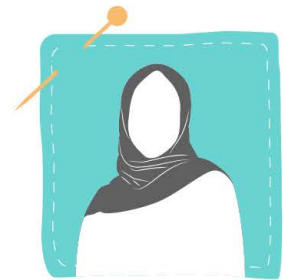
Sara Abahussain
Office Manager



Khawla Alrudeman
Project Manager



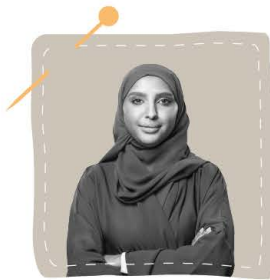
Reema Alsalamah
Employee Experience Specialist



Hind Aloraier
Business Support Specialist



Hussin Albosaleh
Senior Accountant



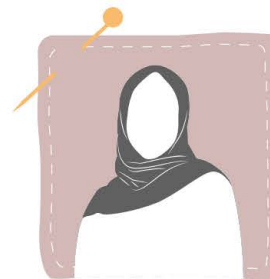
Reema Alhindi
Accountant and Financial Specialist



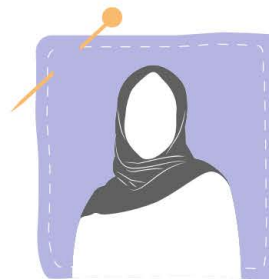
Salma Saleh
Senior Creative Designer



Loubna Alhowide
Senior Creative Designer



Ebtessam Attar
Creative Designer



Luluh Allafi
Creative Designer

PARTNERING
in Achievement

We offer tailor-made legal advisory proposals,
please contact us for further information.



Faisaliah Tower | King Fahad Road
Riyadh | Saudi Arabia

+966 11 484 7171

info@erlf.com

www.erlf.com



EYAD REDA LAW FIRM LLP



ERLF_LLP